



SCHOLÉ ACADEMY
CLASSICAL ACADEMIC PRESS

Introduction to Portraiture

Fall Semester
Academic Year 2023/24

ELIGIBLE STUDENTS:

Rising 6th - 12th graders: *Previous drawing experience is recommended for this course as our primary focus will not be on establishing foundational drawing skills, but on developing pre-existing skills to effectively and creatively communicate visual information. Students who have completed courses such as Drawing With Grayscale, Intro to Painting, or any previous drawing course will be well equipped to join Portraiture. A sense of wonder, creative courage, and perseverance are beneficial postures for flourishing in this course.*

Class Start Date: Tuesday, September 5th

Class End Date: Thursday, January 18th

Class Orientation: Week of August 28th

Class Times: Tuesday & Thursday; 2:00pm - 3:15pm (EST)

Instructor: Sara Silkwood

E-mail: ssilkwood.scholeacademy@gmail.com

SCHEDULE FOR INTRODUCTION TO PORTRAITURE:

CLASS SESSIONS DATES:

Classes will take place on Tuesdays & Thursdays: 2:00pm — 3:15pm (EST) for 16 weeks and 32 classes*

**Please note the above dates and times are the anticipated class sessions for this course. However, all dates are subject to change as the instructor's circumstances might dictate (e.g. illness, family emergency). Any classes canceled by the instructor will be made up at an alternate time designated by the instructor.*

INTRODUCTION TO PORTRAITURE COURSE MAP:

Quarter 1

1. Introduction to the portrait
2. Historical and contemporary portrait painters
3. The skull
4. Muscles of the head

Quarter 2

1. Features of the face
2. Light and shadows
3. Hair
4. Final portrait drawing

OFFICE HOURS: In addition to scheduled class times, I will be available to meet with students and parents by appointment to answer questions or review class material.

REQUIRED COURSE MATERIALS:

Teaching art online is a unique learning experience to navigate. If at all possible, buy the version of supply linked below. I can help students navigate obstacles more effectively when we are all using the same materials. If you have any questions regarding supplies, please feel free to email me.

- Any kind of sketchbook (minimum size 8"x10"): We will use these for exercises and notes. If you already have one that you use, that will do!
- Document camera (such as Ipevo), or equivalent*
- Pad of **SMOOTH** newsprint ([link](#))
- 11x14" drawing paper pad ([link](#))
- Drawing pencils ([link](#))
- 2-3 Conte à Paris Pierre Noire B pencils ([link](#))
- Sanguine pencil ([link](#))
- White conte pencil ([link](#))
- 2 pieces of toned drawing paper in your choice of color ([link](#))
- Soft vine charcoal ([link](#))
- Kneaded Eraser
- Pencil sharpener
- Drawing board
- Standing mirror

OPTIONAL COURSE MATERIALS:

- Spray Fixative
- Painter's tape
- Paper stumps (for smudging)

*EpocCam ([link](#)) is an app for the iPhone that turns your phone into a document camera. Ipevo has an app for Android phone ([link](#)), but I have not used it. Paired with a tension arm like this ([link](#)), and you have a very affordable alternative to a dedicated document camera. It will automatically link to Zoom.

INTRODUCTION TO PORTRAITURE COURSE DESCRIPTION:

The aim of this course is to instill in students both respect for the creation and reverence for the Creator while learning the methods and techniques of portraiture and figure drawing. Students will learn to create impactful portraiture in a variety of methods and mediums. Students will begin by learning foundational anatomy, such as the skeletal and musculature systems, in order to ground their skills in accuracy. While exploring figurative work, students will learn how to create expressive and dynamic forms through gestural mark-making.

In this course, we will approach drawing our fellow men with a sense of wonder for God's creation and a recognition that all persons are made in the image of God and are fearfully and wonderfully made. We will be continually informed in our studio practice by the Scriptures as well as texts such as *The Weight of Glory* by C.S. Lewis. While learning to appreciate and render the human form, we will continually discuss what it means to be made in the image of God and acknowledge that we are more than simply the bodies that we possess—we have eternal souls.

Through demonstrations, personal instruction, and exercises, students will explore different subjects/compositions, textures, papers, and application techniques suitable for each unique medium. Students will be encouraged to practice exercises taught in class and may need to work outside of class to complete projects.

Along with hands-on studio work, students will participate in regular class critiques, creating a forum for the group to constructively collaborate and discuss creative outcomes. Individual artist statements will be required with most finished pieces of work, giving students another opportunity to articulate their interpretive intent and their understanding of process and design concepts.

Students can also expect ongoing dialogues about the rich history of classical portraiture and figure drawing, contemporary portraiture, Christian imagination in relationship to faith and the arts, and the role of the arts in the Church. This course is supplemented by daily readings and reflections on art and faith by authors such as C.S. Lewis, Francis Shaffer, Pope John Paul II, and Makoto Fujimura, which will be provided by the instructor. The hope of the instructor is that, through engagement in the class, students will be brought to a deeper appreciation of the visual world and the creative love of its Maker.

STUDENT EXPECTATIONS: EXECUTIVE FUNCTION SKILLS

Students are expected to arrive to class on time with their needed materials prepped and ready to use. Students are expected to listen attentively and participate actively in class discussions and exercises. Each individual is responsible for staying up-to-date with classwork/assignments and for taking the initiative to reach out when in need of help.

Unless due to emergency or illness, students are expected to communicate absences with me at least a full day prior to the class in question. Unexcused absences and tardiness will affect the student's class participation grade.

STUDENT EVALUATION: GRADING

I will be providing feedback/critique constantly through zoom as well as in writing. In addition to this, I will assign the following grades to the student's level of achievement: *magna cum laude* (with great praise); *cum laude* (with praise); *satis* (sufficient, satisfactory) and *non satis* (not sufficient).

Ideally, every average student working diligently should do praiseworthy work (*cum laude*). Those who excel beyond this expectation will be the *magna cum laude* students. Students who do adequate but not praiseworthy work be designated *satis*. *Non satis* means lacking sufficiency or adequacy.

STUDENT EVALUATION: MASTERY PORTRAIT

At the completion of this course *cum laude* students will be able to...

- Operate successfully in a studio setting and care for their materials
- Create formal still lives and drawings from life
- Render a variety of complex subjects and surfaces with skill using variety of materials and techniques
- Critique their own and other's art in an informed manner
- Make intentional artistic decisions and investigate self-generated ideas

STUDENT EVALUATION: ASSIGNMENTS, TYPES & WEIGHTS

Students will be evaluated in the following categories:

1. Class Participation: 30%
2. Homework and Exercises: 20%
3. Projects: 50%

STUDENT EVALUATION: ACADEMIC DISHONESTY

Students will spend the majority of the class creating original pieces of art. Claiming someone else's work as your own is a serious and punishable offense. A plagiarized assignment will result in a failing grade.

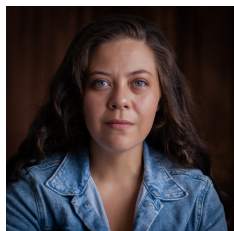
THE VIRTUAL CLASSROOM:

We will be using the free online “virtual classroom” software provided by Zoom, one of the leading companies that provides such software. The virtual classroom will provide students with interactive audio, text chat and an interactive whiteboard in which texts, diagrams, video and other media can be displayed and analyzed. We will provide students with a link (via email) that will enable students to join the virtual classroom.

Specific information regarding the technology used by Scholé Academy (including required technology) can be found by visiting the [Technology in the Classroom](#) section of the Student Parent Handbook.

Students will submit documents by scanning and uploading them to their personal computer, then attaching those files as .pdfs to an email. They will submit their work to the Canvas assignment page (access granted after enrollment is secured).

ABOUT THE INSTRUCTOR:



Sara Silkwood holds a Bachelor of Fine Arts in Illustration from Syracuse University. Sara has several years experience teaching in a variety of areas including college level, church-run camps, Classical schools and privately. She also serves as the fine arts teacher at Valor Preparatory Academy. Currently, Sara works out of her home studio in Waco, Texas where she lives with her great dane-lab mix, Oberon. She spends her free-time backpacking, reading and illustrating her own stories.